

A 21st century company, investing in the future... and the past!

Building a replica of the worlds first Motor Car

By developing high pressure steam against the advice of men like James Watt, Richard Trevithick (the captain of a Cornish tin mine) was working with an unknown, unseen force that could have killed him at any time.



His confidence in high pressure steam provided the world with compact, self contained engines which he demonstrated as the motive power on road, rail and the high seas.

In 1996 The Trevithick Society, a registered Charity, embarked upon a project to build a replica of one of Trevithick's most important inventions – the **World's First Motor Car**.

Trevithick built and operated the original of this replica to carry passengers on Christmas Eve, 1801. His short journey took him up Camborne Hill in Cornwall, where

the replica also followed in its footsteps 200 years later. He went on to create among other things a locomotive running on rails a quarter of a century before Stephenson's 'Rocket'.

With the help of grants and donations from many sources, over thirty companies were asked to work on different parts of the project. As much as possible was undertaken locally, but when it came to the precision and expertise needed to create a working boiler system, the society looked to Dudley in the West Midlands –

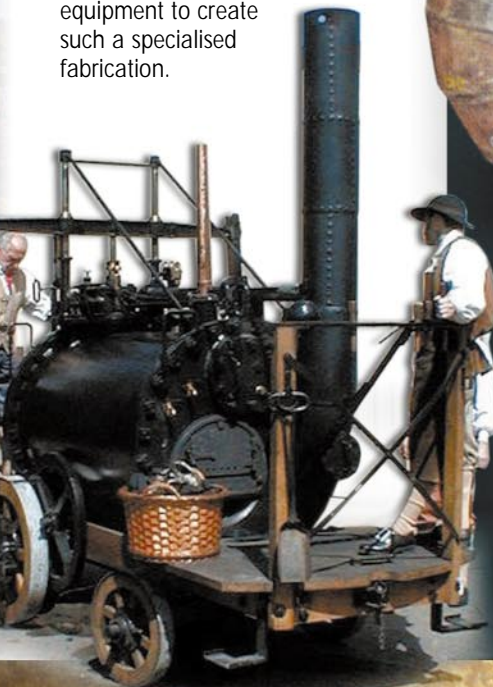
Deepdale Engineering Limited with Our skilled workforce, half a century of experience and the equipment to create such a specialised fabrication.



The replica being tested going up Camborne hill...



...and coming down!



The Heart of the Beast, from the heart of the country

When the Trevithick Project Team needed a company to faithfully recreate the vital steam boiler, they naturally contacted Deepdale. We have the specialist skills and equipment to reproduce every aspect of the original design, whilst bearing in mind modern safety regulations.

As usual at Deepdale we were delighted to be asked about contributing to such an ambitious and worthwhile project and our enthusiastic team helped bring the rebuilding of the replica to fruition.

DEEPDALE

ENGINEERING CO. LTD.

www.deepdale-eng.co.uk



Deepdale get all ship shape for 'Tenacious'

'Making an impact as she sailed into Jersey this morning on her maiden voyage from Southampton was the Jubilee Trust ship, Tenacious.' reported the Jersey Evening Post – front page, 4th September 2000.

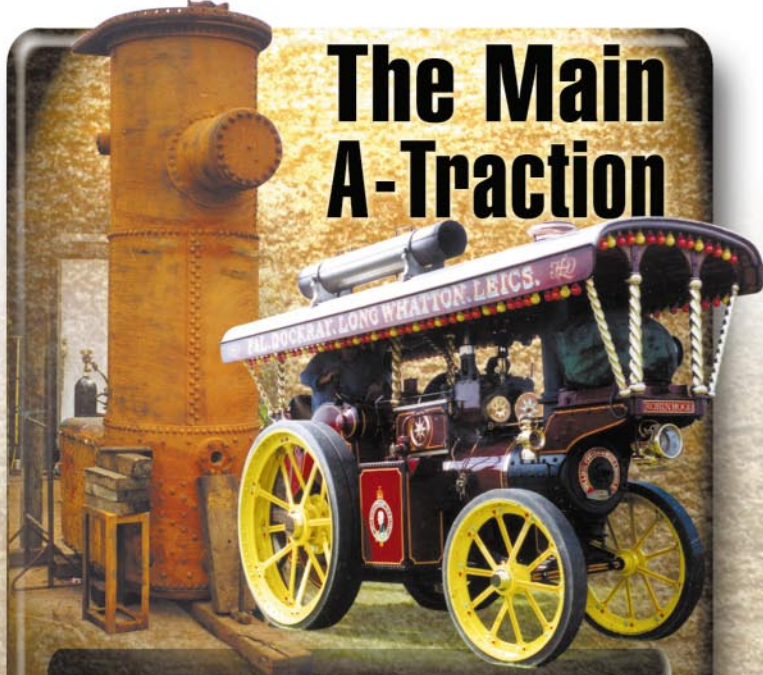
An impressive sight indeed, a fully rigged £1m tall ship. It is ironic that Deepdale are in a completely landlocked county, but that did not matter to the Jubilee Trust, they knew that it would take a very special piece of craftsmanship to roll the oval sectioned mast and we were only too glad to oblige.

If you have a project, as a commercial venture or as an enthusiastic restorer that you think Deepdale may be able to help you with, give us a call on the number below:

Tel: 01384 480022 Fax: 01384 480489
or visit our website at www.deepdale-eng.co.uk to see more of the skills we can offer you.



The Main A-Traction



Yes, Deepdale have added yet another steam restoration project to their list. We have recently supplied a new boiler and fire box to allow F & L Dockray to get the 'Robin Hood', shown above, back to its original pristine condition.

Deepdale - History is in the making

Deepdale is currently run by David Nock, and it was his father (Arthur - pictured second from left) and grandfather (Josiah) who started the business in 1949. Both were experienced engineers, who bought into a business which consisted of a small workshop and a few lathes.

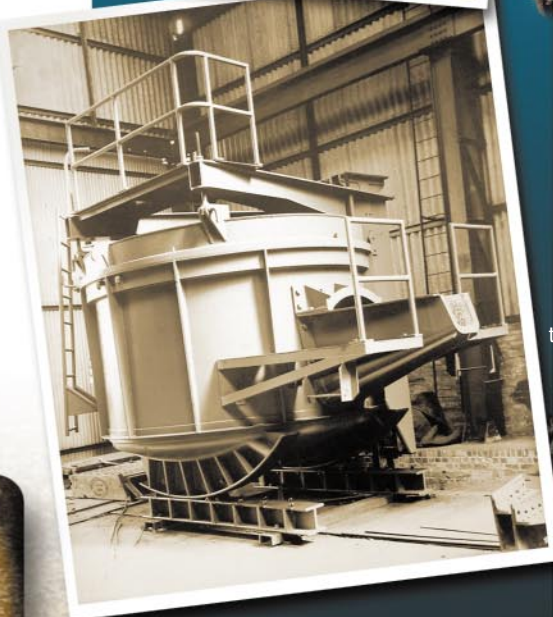
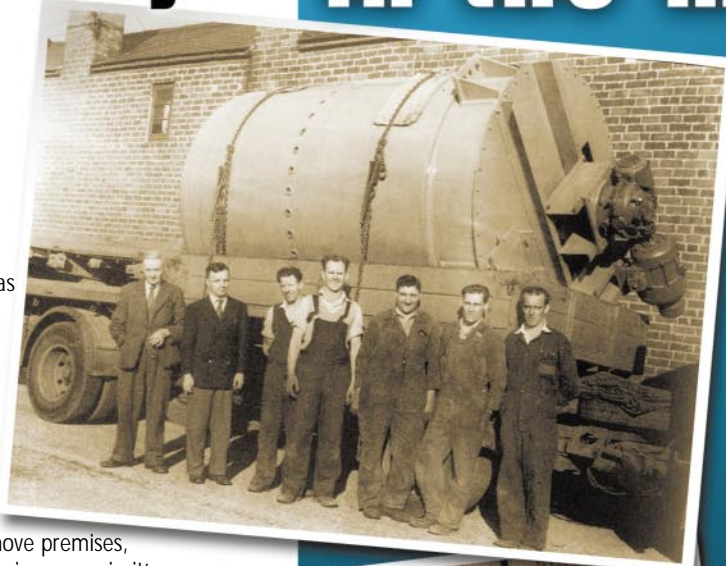
The duo made a great success of the business and as it grew, they moved to new premises in New Road, Dudley. Deepdale were becoming well respected for their steel plate, press brake work, specialist heavy fabrications and manufacturing of boilers and pressure vessels. Business continued to increase and Arthur moved the business again before settling at the current site in Dudley in the mid '50's.

Just as the company has always been prepared to move premises, they have also always invested in plant. When the business was in its infancy, heavy loads would be loaded onto trucks using block and tackle and a lot of muscle - seams on pressure vessels were closed with little or no protection from fumes!

Now we have all of the latest plant to make projects as safe and efficient as possible without losing the valuable skills and expertise of our workforce built up over the last 50 years!

If you have a project, as a commercial venture or as an enthusiastic restorer, that you think Deepdale may be able to help you with, give us a call on the number below:

Tel: 01384 480022 Fax: 01384 480489
or visit our website at www.deepdale-eng.co.uk

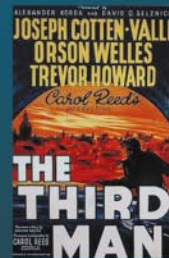


An early project from the 50's - a Huge Hopper

Even thirty years ago we were making specialist vessels of vast proportions



the world in
1949



Orson Welles in 'The Third Man'



The latest things on the road (Land Rover & Morris Minor)



televisions were large - but small



British bikes ruled the world!

NATO was formed

West Germany established

Chairman Mao formally proclaimed the Communist People's Republic of China

Wolverhampton Wanderers beat Leicester City 3-1 in the FA Cup

George Orwell's 1984 is published

Trevithick Steam Car ON TOUR!

On our last Heritage Journal we featured the reconstruction of the Trevithick Steam Car. Deepdale recreated the boiler using our specialist skills and experience.

You may like to know that the replica is touring the country and more information can be found at www.trevithick-society.org.uk

